



AQUACHECK LIQUID AIR BARRIER

SPECIFICATION INFORMATION VAPOR RETARDERS DIVISIONS: 071100, 071400

Revised: 7-3-13

1.0 Product Name

Viper® AquaCheck Liquid AB
Liquid Applied Vapor Permeable
Air Barrier Membrane

2.0 Manufacturer



Insulation Solutions®

Insulation Solutions Inc.
401 Truck Haven Road
East Peoria, IL 61611, USA

Engineering Assistance
Toll Free: 866-698-6562
Fax: 309-698-0065
www.insulationsolutions.com

3.0 Product Description

3.1 Basic Use:

AquaCheck Liquid AB is a liquid applied, vapor permeable air barrier that allows proper drainage in various types of wall systems and promotes drying of the wall cavity in either direction. It provides protection from the effects of energy loss, condensation, efflorescence, bacterial growth and mold. **AquaCheck Liquid AB** is suitable for application to concrete, CMU, cast-in-place concrete or gypsum sheathing. It can be spray, brush or roller applied. After curing, **AquaCheck Liquid AB** is a resilient, seamless membrane with water-resistant properties.

3.2 Advantages

- VOC, HAPS and ASBESTOS FREE
- Single Component
- Vapor Permeable
- User-Friendly - Ready to Use
- Adheres to Damp Surfaces
- Forms a Seamless Membrane
- Reduces Labor - Application Rate Yields 28 Dry Mills in One Coat
- Strong Adhesion to Common Construction Substrates
- Longer UV Exposure Time

3.3 Composition & Materials:

AquaCheck Liquid AB is an asphalt emulsion with selected colloids to formulate a waterproof coating.

AquaCheck Liquid AB is 100% Asbestos, VOC and HAPs free.

Composition:

Asphalt	CAS 8052-42-4
Water	CAS 7732-18-5
Clay	CAS 1332-58-7

3.4 Size and Packaging:

AquaCheck Liquid AB is supplied in 1-gallon (3.8 L) cans, 5-gallon (18.9 L) pails, 55-gallon (208 L) drums and 281-gallon (1064 L) totes. The recommended storage temperature ranges between 70°F (21°C) and 140°F (60°C). KEEP FROM FREEZING.

4.0 Installation

4.1 AquaCheck Liquid AB is roller, brush or spray applied in one or two coats to the exterior vertical or horizontal surfaces of cast-in-place concrete, concrete masonry units, wood, metal, ICF and OSB

4.2 Substrate Preparation:

The surface to which **AquaCheck Liquid AB** is applied must be structurally sound, clean and dry and free of dust, mud, loose mortar, sand, soil, frost or other loose materials. There must be no fins, metal projections or any substance that will prevent bonding of the coating membrane to the surface.

Voids in concrete, tie holes and honeycombed areas in the foundation wall must be filled with non-shrinking grout or an asphalt based mastic. Where non-shrinking grout is used for filling voids, the grout must be allowed to cure before the membrane is applied.

Concrete and parged masonry surfaces must be cured and dry prior to application of the liquid air barrier membrane.

4.3 Application Temperature:

The air temperature for application of **AquaCheck Liquid AB** can be as low as 26°F. **However, the product must not be allowed to freeze in the container or application equipment.** There is no maximum air temperature application limit.

4.4 Application Procedure:

AquaCheck Liquid AB can be applied by spray, roller or brush in one or two coats to an application of 35 mils wet, which will yield 20 mils dry. These equate to an application rate of 40 square feet per gallon. The coating will be dry to the touch within 10 minutes, but should be allowed to cure for 4-24 hours after application.

AquaCheck Liquid AB is self priming and does not require the use of a primer. It has been tested compatible with all ABAA certified transition membranes and may be applied below and/or above these membranes. It is not recommended that **AquaCheck Liquid AB** be installed over vertical polyethylene surfaces.

4.5 Surface Temp. & Chemical Resistance:

AquaCheck Liquid AB is resistant to chemical attack and is very resistant to acids and salts. It should not be applied on surfaces that exceed 210°F.

4.6 Clean Up:

AquaCheck Liquid AB can be cleaned while wet with soap and water. If the **AquaCheck Liquid AB** has cured; it can be removed with mineral spirits.

4.7 Storage & Limitations:

- KEEP MATERIAL FROM FREEZING
- DO NOT THIN MATERIAL
- DO NOT HEAT PRODUCT OVER 160°F

5.0 Technical Data

5.1 Applicable Standards

- **ASTM E 2178** Standard Test Method for Air Permeance of Building Materials
- **ASTM E 96** Standard Test Methods for Water Vapor Transmission of Materials
- **ASTM D 412** Standard Test Methods for Vulcanized Rubber and Thermoplastic Elastomers-Tension
- **ASTM C 836** Standard Specification for High Solids Content, Cold Liquid-Applied Elastomeric Waterproofing Membrane for Use with Separate Wearing Course
- **ASTM D 1970** Standard Specification for Self-Adhering Polymer Modified Bituminous Sheet Materials Used as Steep Roofing Underlayment for Ice Dam Protection
- **ASTM D 4541** Standard Test Method for Pull-Off Strength of Coatings Using Portable Adhesion Testers
- **ASTM D 2697** Standard Test Method for Volume Nonvolatile Matter in Clear or Pigmented Coatings
- **ASTM D 2939** Standard Test Methods for Emulsified Bitumens Used as Protective Coatings
- **ASTM D 1227** Standard Specification for Emulsified Asphalt Used as a Protective Coating for Roofing
- **MSMT Designation 423** Analysis of a water based modified asphalt coating for compliance with the performance requirements of MSMT Designation 423 for Cold Applied Dampproofing and Waterproofing Materials.



6.0 Availability & Cost

AquaCheck Liquid AB is sold through construction supply houses across the United States and Canada.

Current cost information for **AquaCheck Liquid AB** can be obtained by calling Insulation Solutions® corporate sales office at 866-698-6562.

7.0 Warranty

To the best of our knowledge, the specification chart lists typical property values and are intended as guides only, not as specification limits. Insulation Solutions, Inc.® makes no warranties as to the fitness for a specific use or merchantability of products referred to, no guarantee of satisfactory results from reliance upon contained information or recommendations and disclaims all liability for resulting loss or damage.

8.0 Maintenance

AquaCheck Liquid AB requires no maintenance once installed.

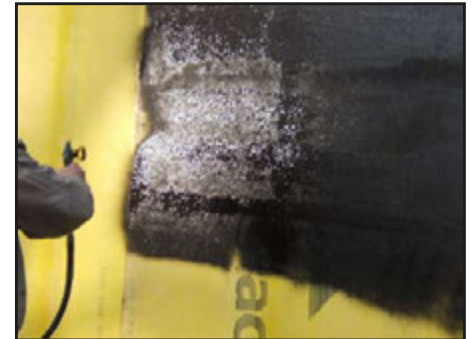
9.0 Technical Services

Technical Information and detailed test results can be obtained by calling our Corporate Office at 866-698-6562.

10.0 Filing Systems

Additional Information is available from Insulation Solutions, Inc.®.

VAPOR PERMEABLE AIR BARRIER



AQUACHECK® LIQUID AB

www.insulationsolutions.com

PROPERTIES	TEST METHOD	VIPER® AQUACHECK® LIQUID AB
Density		8.1 lbs/gallon (0.92 g/cm ³)
Weight per Gallon	ASTM D 2939-98	9.23 lbs/gallon
Solids Content	ASTM D 2697	65.62%
Residue by Evaporation	ASTM D 2939-98	49.70%
Flammability	ASTM D 2939-98	No tendency to flash or ignite
Ash Content	ASTM D 2939-98	33.8%
Water Content	ASTM D 2939-98	50.0%
Firm Set	ASTM D 2939-98	Firm set after 24 hours
Heat Test	ASTM D 2939-98	No blistering, sagging or slipping
Flexibility at 60°F	ASTM D 2939-98	Pass - No cracking or loss of adhesion
Low Temperature Flexibility and Crack Bridging	ASTM C 836 Sec. 6.7	No cracking or loss of adhesion @ -14.8°F (-26°C)
Resistance to Water	ASTM D 2939-98	No blistering or reemulsification
Direct Flame Test	ASTM D 2939-98	Chars in place
Water Vapor Permeance	ASTM E 96	5.5 perms
Air Permeability	ASTM E 2178	0.00159 L/s/m ² @ 75 Pa
Elongation	ASTM D 412-98	>600%
Tensile Strength	ASTM D 412-98	41.3 psi (284.75 kPa)
Adhesion Strength to Poured Cement	ASTM C 836 Sec. 6.10	13.239 lbf/in. (1.49 N/m)
Adhesion Strength to Masonry	ASTM C 836 Sec. 6.10	12.092 lbf/in. (1.37 N/m)
Pull Adhesion to Poured Cement	ASTM D 4541	77.2 psi (532.3 kPa)
Pull Adhesion to Masonry	ASTM D 4541	106 psi (730.8 kPa)
Nail Sealability	ASTM D 1970-01	Pass - No Leaks

NOTE: AQUACHECK® LIQUID AB COMPLIES TO THE TESTING REQUIREMENTS IN MSMT DESIGNATION 423 FOR COLD APPLIED WATERPROOFING MATERIALS.